

DOROTA KULLOVA



HEIGHT 180 CM / 5'11" | CHEST 83 CM / 32.5" | WAIST 63 / 24.5 | HIPS 91 CM / 36" | HAIR BROWN | EYES BROWN-GREEN
DRESS 36 EU / 6 US / 8 UK | SHOES 40 EU / 9 US / 6.5 UK

wiener
models
A KULT AGENCY

DOROTA KULLOVA



LOOK, IT'S FASHION!

CO JE MÓDA, JAK SE VRÁTIT
K JEJÍM KOŘENŮM A PROČ
SE PRÁVĚ TEĎ ROZHODUJE
O BUDOUCNOSTI LUXUSU

CENA: 129 Kč, 5,99 €



HEIGHT 180 CM / 5'11" | CHEST 83 CM / 32.5" | WAIST 63 / 24.5 | HIPS 91 CM / 36" | HAIR BROWN | EYES BROWN-GREEN

DRESS 36 EU/6 US/8 UK | SHOES 40 EU/9 US/6.5 UK

wiener
models
A KULT AGENCY

DOROTA KULLOVA



Podprsenka s perím a nohavice, Pavol DENDIS
Rukavice, ASOS

Čipkovaný top, Petra KOVACS

HEIGHT 180 CM / 5'11" | CHEST 83 CM / 32.5" | WAIST 63 / 24.5 | HIPS 91 CM / 36" | HAIR BROWN | EYES BROWN-GREEN
DRESS 36 EU/6 US/8 UK | SHOES 40 EU/9 US/6.5 UK

wiener
models
A KULT AGENCY

DOROTA KULLOVA

Was Frauen wirklich interessiert

Dezember 2025

maxima

1,- Euro

präsentiert von BIPA

cosy CHRISTMAS

AUSGESUCHT. Unser Geschenke-Guide für Weihnachten.

AUFGEDECKT. Feierliche Deko für Tisch und Baum.

ANZIEHEND. Im Winter kuscheln wir uns in fashionable Knit Wear.

ME FIRST.

Warum wir öfter
Nein sagen sollten
– und wie.

WINTERING.

Wir machen es
jetzt wie die Tiere
– und halten
Winterruhe.

Bis zu 50% beim
nächsten Einkauf sparen
Gutscheine am Heftende

HEIGHT 180 CM / 5'11" | CHEST 83 CM / 32.5" | WAIST 63 / 24.5 | HIPS 91 CM / 36" | HAIR BROWN | EYES BROWN-GREEN
DRESS 36 EU/6 US/8 UK | SHOES 40 EU/9 US/6.5 UK

wiener
models
A KULT AGENCY

DOROTA KULLOVA



Denimový kabát
a nohavice,
LUKÁŠ KRNÁČ

HEIGHT 180 CM / 5'11" | CHEST 83 CM / 32.5" | WAIST 63 / 24.5 | HIPS 91 CM / 36" | HAIR BROWN | EYES BROWN-GREEN
DRESS 36 EU / 6 US / 8 UK | SHOES 40 EU / 9 US / 6.5 UK

wiener
models
A KULT AGENCY

DOROTA KULLOVA

beauty



Charakterstudie

Dominant ist hier Silber. Beinahe das gesamte Augenlid wird in metallischen Glanz getaucht. Den perfekten Rahmen bildet ein schwarzer Eyeliner. Am Ende verlaufen Silber und Schwarz in einen exzellenten Wing.

Rollkragenbody von Wolford, Netzstrümpfe von Kunert, Melone von Mayser, Slingback-Pumps von H&M

52 maxima

HEIGHT 180 CM / 5'11" | CHEST 83 CM / 32.5" | WAIST 63 / 24.5 | HIPS 91 CM / 36" | HAIR BROWN | EYES BROWN-GREEN
DRESS 36 EU / 6 US / 8 UK | SHOES 40 EU / 9 US / 6.5 UK

wiener
models
A KULT AGENCY

DOROTA KULLOVA

beauty

Rampenlicht

Ein schmaler schwarzer Eyeliner mit einem graziösen Schwalbenschwanz am Ende und gleich darüber in der Nebenrolle: ein etwas breiterer Eyeliner in Silber.

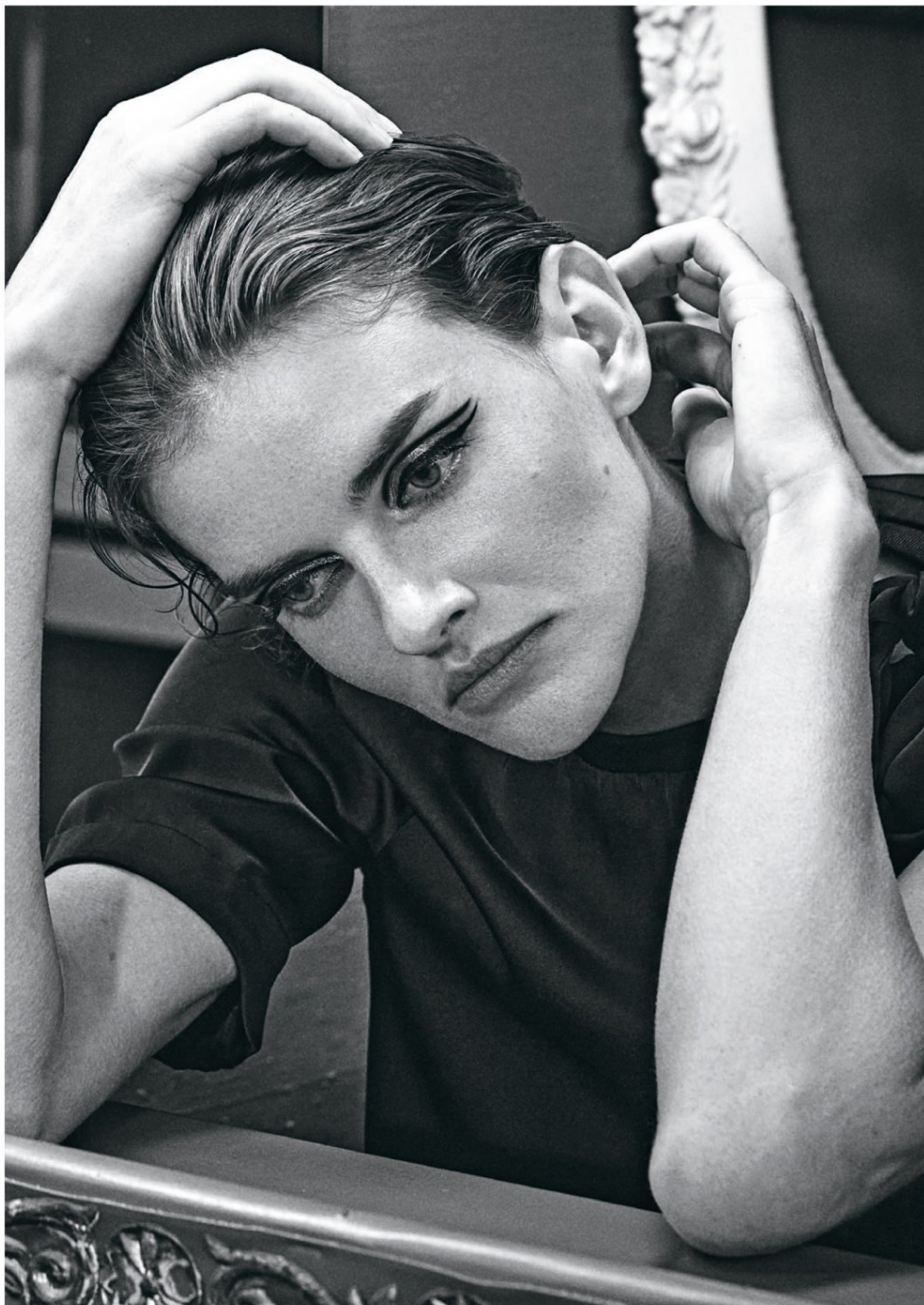
Zopfstrick-Pullover von Drykorn, Samt-Shorts von Calzedonia, Netzstrümpfe von Kunert

54 maxima

HEIGHT 180 CM / 5'11" | CHEST 83 CM / 32.5" | WAIST 63 / 24.5 | HIPS 91 CM / 36" | HAIR BROWN | EYES BROWN-GREEN
DRESS 36 EU / 6 US / 8 UK | SHOES 40 EU / 9 US / 6.5 UK

wiener
models
A KULT AGENCY

DOROTA KULLOVA



Zwischenakt

Perfekt in der Mitte liegt ein breiter Eyeliner in Silber, der sowohl direkt am Lidrand als auch in der Lidfalte von einem dünnen schwarzen Eyeliner eingerahmt wird.

Asymmetrisches Satin-Oberteil von Chanel

55

HEIGHT 180 CM / 5'11" | CHEST 83 CM / 32.5" | WAIST 63 / 24.5 | HIPS 91 CM / 36" | HAIR BROWN | EYES BROWN-GREEN
DRESS 36 EU / 6 US / 8 UK | SHOES 40 EU / 9 US / 6.5 UK

wiener
models
A KULT AGENCY

DOROTA KULLOVA



HEIGHT 180 CM / 5'11" | CHEST 83 CM / 32.5" | WAIST 63 / 24.5 | HIPS 91 CM / 36" | HAIR BROWN | EYES BROWN-GREEN
DRESS 36 EU / 6 US / 8 UK | SHOES 40 EU / 9 US / 6.5 UK

DOROTA KULLOVA



HEIGHT 180 CM / 5'11" | CHEST 83 CM / 32.5" | WAIST 63 / 24.5 | HIPS 91 CM / 36" | HAIR BROWN | EYES BROWN-GREEN
DRESS 36 EU / 6 US / 8 UK | SHOES 40 EU / 9 US / 6.5 UK

wiener
models
A KULT AGENCY

DOROTA KULLOVA



HEIGHT 180 CM / 5'11" | CHEST 83 CM / 32.5" | WAIST 63 / 24.5 | HIPS 91 CM / 36" | HAIR BROWN | EYES BROWN-GREEN
DRESS 36 EU/6 US/8 UK | SHOES 40 EU/9 US/6.5 UK

DOROTA KULLOVA

FASHIONELLE



FOTO PHILIPP JELENSKA STYLING MÁRIA KOHÚTIK

125

HEIGHT 180 CM / 5'11" | CHEST 83 CM / 32.5" | WAIST 63 / 24.5 | HIPS 91 CM / 36" | HAIR BROWN | EYES BROWN-GREEN
DRESS 36 EU / 6 US / 8 UK | SHOES 40 EU / 9 US / 6.5 UK

wiener
models
A KULT AGENCY

DOROTA KULLOVA



HEIGHT 180 CM / 5'11" | CHEST 83 CM / 32.5" | WAIST 63 / 24.5 | HIPS 91 CM / 36" | HAIR BROWN | EYES BROWN-GREEN
DRESS 36 EU / 6 US / 8 UK | SHOES 40 EU / 9 US / 6.5 UK

wiener
models
A KULT AGENCY

DOROTA KULLOVA



HEIGHT 180 CM / 5'11" | CHEST 83 CM / 32.5" | WAIST 63 / 24.5 | HIPS 91 CM / 36" | HAIR BROWN | EYES BROWN-GREEN
DRESS 36 EU/6 US/8 UK | SHOES 40 EU/9 US/6.5 UK

wiener
models
A KULT AGENCY

DOROTA KULLOVA



HEIGHT 180 CM / 5'11" | CHEST 83 CM / 32.5" | WAIST 63 / 24.5 | HIPS 91 CM / 36" | HAIR BROWN | EYES BROWN-GREEN
DRESS 36 EU / 6 US / 8 UK | SHOES 40 EU / 9 US / 6.5 UK

wiener
models
A KULT AGENCY

DOROTA KULLOVA

KEĎ ODBIJE
POLNOC, Z POPOLUŠKY
SA STANE DIVA. NA STROHOŠŤ
UŽ NIE JE ČAS. OPULENCIA
HLÁSI SVOJ PRÍCHOD. NIELEN
V STRIHOCH, LÁTKACH, ALE
AJ V POUŽITÍ RAFINOVANÝCH
DETAILOV. TIK-TAK...



Foto Lukáš KIMLIČKA
Mejkap Tomáš VIDA/DERMACOL
Vlasy Nikolas TICHÝ/ORIBE HAIR CARE
Styling Miroslava DANIELOVÁ
Produkcia Andrea KUBALÁKOVÁ
Ďakujeme hotelu BRISTOL vo Viedni
za možnosť fotiť v ich priestoroch.

HEIGHT 180 CM / 5'11" | CHEST 83 CM / 32.5" | WAIST 63 / 24.5 | HIPS 91 CM / 36" | HAIR BROWN | EYES BROWN-GREEN
DRESS 36 EU/6 US/8 UK | SHOES 40 EU/9 US/6.5 UK

wiener
models
A KULT AGENCY

DOROTA KULLOVA



HEIGHT 180 CM / 5'11" | CHEST 83 CM / 32.5" | WAIST 63 / 24.5 | HIPS 91 CM / 36" | HAIR BROWN | EYES BROWN-GREEN
DRESS 36 EU / 6 US / 8 UK | SHOES 40 EU / 9 US / 6.5 UK

wiener
models
A KULT AGENCY

DOROTA KULLOVA



Kabát a nohavice, SHEV

BUBBLES

Foto Jakub Gulyas, Make-up a vlasy Tomáš Vída/Dermacol
Styling Miroslava Danielová, Modelka Dorota/Elite Bratislava
Za pomoc pri tvorbe editorálu ďakujeme profesionálnemu
bublinovému performerovi www.mrbubble.sk

Farba a forma... tak znie čarovné spojenie zimnej
módnej sezóny.

HEIGHT 180 CM / 5'11" | CHEST 83 CM / 32.5" | WAIST 63 / 24.5 | HIPS 91 CM / 36" | HAIR BROWN | EYES BROWN-GREEN
DRESS 36 EU / 6 US / 8 UK | SHOES 40 EU / 9 US / 6.5 UK

wiener
models
A KULT AGENCY

DOROTA KULLOVA



Oči: kajalová ceruzka, YSL Crush Liner, odtieň 1 Black; tieň, YSL Satin Crush, odtieň 27 Decadent Bronze a 28 Unconforming Taupe; maskara, YSL Lash Clash
táča: woodstock VOT Couture Highline odtieň 1 Au Dées Dées: hudebník w3 VOT Dées: talianska China Finestial Dalm odtieň 150 Nuda Finestial

HEIGHT 180 CM / 5'11" | CHEST 83 CM / 32.5" | WAIST 63 / 24.5 | HIPS 91 CM / 36" | HAIR BROWN | EYES BROWN-GREEN
DRESS 36 EU/6 US/8 UK | SHOES 40 EU/9 US/6.5 UK

wiener
models
A KULT AGENCY

DOROTA KULLOVA



HEIGHT 180 CM / 5'11" | CHEST 83 CM / 32.5" | WAIST 63 / 24.5 | HIPS 91 CM / 36" | HAIR BROWN | EYES BROWN-GREEN
DRESS 36 EU / 6 US / 8 UK | SHOES 40 EU / 9 US / 6.5 UK

wiener
models
A KULT AGENCY

DOROTA KULLOVA

L'OFFICIEL

AUSTRIA

N°12 - Winter 2021/22 - 5,90 € - WWW.LOFFICIEL.AT

From the *exotic* Cruise collections to *other-worldly* beautiful designs – a style journey through the *fashion universe*

THE PINNACLE OF LUXURY

From alpine ski looks to the sophisticated it-places in the glamorous destination of Kitzbühel – the slopes are calling!

IN THE HIGHEST SPHERES

An excursion into the heavenly world of Haute Joaillerie and Haute Couture

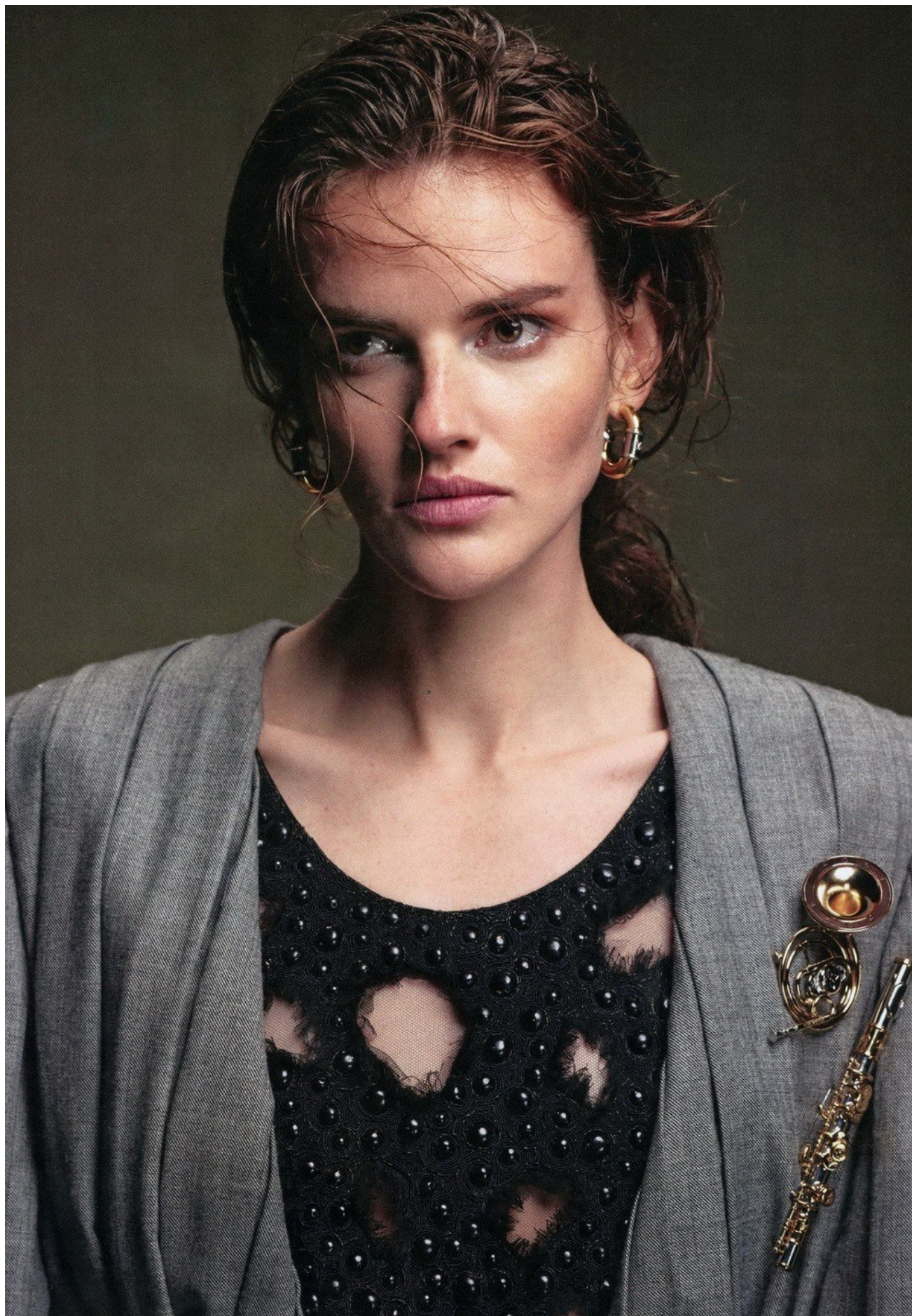
Voyage, VOYAGE

9 119000 110198 5711
COMPLETE LOOK FROM THE AUTUMN/WINTER COLLECTION 2021/22. LOUIS VUITTON

HEIGHT 180 CM / 5'11" | CHEST 83 CM / 32.5" | WAIST 63 / 24.5 | HIPS 91 CM / 36" | HAIR BROWN | EYES BROWN-GREEN
DRESS 36 EU/6 US/8 UK | SHOES 40 EU/9 US/6.5 UK

wiener
models
A KULT AGENCY

DOROTA KULLOVA



HEIGHT 180 CM / 5'11" | CHEST 83 CM / 32.5" | WAIST 63 / 24.5 | HIPS 91 CM / 36" | HAIR BROWN | EYES BROWN-GREEN
DRESS 36 EU / 6 US / 8 UK | SHOES 40 EU / 9 US / 6.5 UK

wiener
models
A KULT AGENCY

DOROTA KULLOVA

_Plet': rozjasňujúci korektor, YSL Touche Éclat High Cover, odtieň 2 Ivory _Pery: hydratačný rúž, YSL Rouge Pur Couture, odtieň 70 Le Nu _Oči: trblietavé tieň,
YSL Sequin Crush, odtieň 6 Confident Nude; paleta tieňov, YSL Decadent Haven Couture Palette _Obočie: ceruzka na obočie, YSL Dessin des Sourcil, odtieň 4 Ash



HEIGHT 180 CM / 5'11" | CHEST 83 CM / 32.5" | WAIST 63 / 24.5 | HIPS 91 CM / 36" | HAIR BROWN | EYES BROWN-GREEN
DRESS 36 EU / 6 US / 8 UK | SHOES 40 EU / 9 US / 6.5 UK

wiener
models
A KULT AGENCY

DOROTA KULLOVA



Při tvorbě ready-to-wear kolekce Louis Vuitton se kreativní ředitel Nicolas Ghesquière sám sebe zeptal: „Co je dnes vlastně francouzský styl?“ Odpověď hledá návratem ke kořenům a každé ženě nabízí její vlastní definici stylu – ono pověstné „je ne sais quoi“.

FOTO PHILIPP JELENSKA

STYLING MÁRIA KOHÚTIK

HEIGHT 180 CM / 5'11" | CHEST 83 CM / 32.5" | WAIST 63 / 24.5 | HIPS 91 CM / 36" | HAIR BROWN | EYES BROWN-GREEN
DRESS 36 EU / 6 US / 8 UK | SHOES 40 EU / 9 US / 6.5 UK

wiener
models
A KULT AGENCY

DOROTA KULLOVA



Saténové šaty, RESERVED
Oversized kabelka, MICHAELA L'UPTÁKOVÁ

HEIGHT 180 CM / 5'11" | CHEST 83 CM / 32.5" | WAIST 63 / 24.5 | HIPS 91 CM / 36" | HAIR BROWN | EYES BROWN-GREEN
DRESS 36 EU/6 US/8 UK | SHOES 40 EU/9 US/6.5 UK

DOROTA KULLOVA



HEIGHT 180 CM / 5'11" | CHEST 83 CM / 32.5" | WAIST 63 / 24.5 | HIPS 91 CM / 36" | HAIR BROWN | EYES BROWN-GREEN
DRESS 36 EU / 6 US / 8 UK | SHOES 40 EU / 9 US / 6.5 UK

wiener
models
A KULT AGENCY

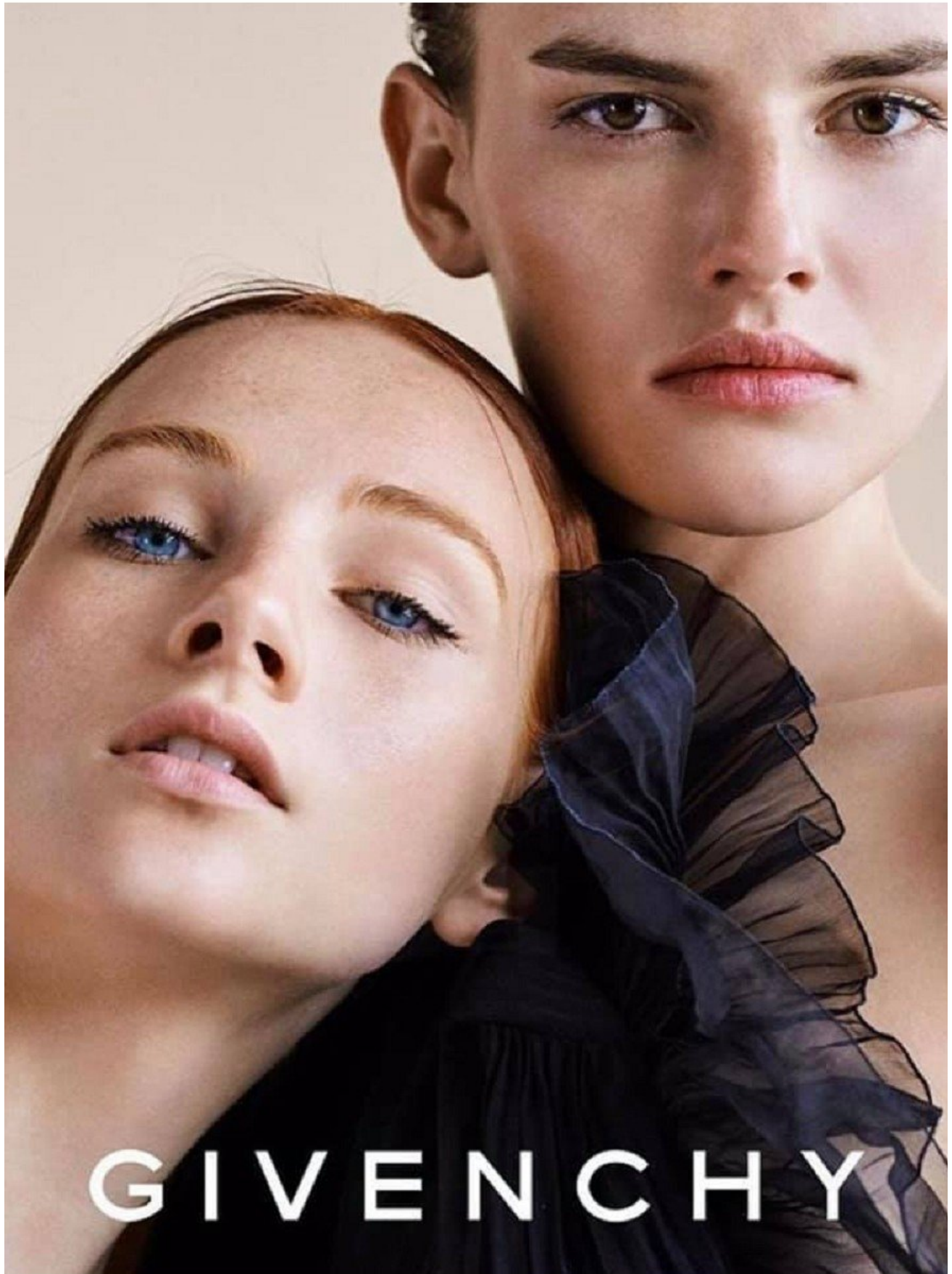
DOROTA KULLOVA



HEIGHT 180 CM / 5'11" | CHEST 83 CM / 32.5" | WAIST 63 / 24.5 | HIPS 91 CM / 36" | HAIR BROWN | EYES BROWN-GREEN
DRESS 36 EU/6 US/8 UK | SHOES 40 EU/9 US/6.5 UK

wiener
models
A KULT AGENCY

DOROTA KULLOVA



HEIGHT 180 CM / 5'11" | CHEST 83 CM / 32.5" | WAIST 63 / 24.5 | HIPS 91 CM / 36" | HAIR BROWN | EYES BROWN-GREEN
DRESS 36 EU / 6 US / 8 UK | SHOES 40 EU / 9 US / 6.5 UK

wiener
models
A KULT AGENCY

DOROTA KULLOVA

L'OFFICIEL

AUSTRIA

N°12 – Winter 2021/22 – 5,90 € – WWW.LOFFICIEL.AT

Von den *exotischen*
Cruise Collections
über *außerirdisch-schöne*
Entwürfe – eine
Stil-Reise durch
das *Mode-*
Universum

GIPFEL DES LUXUS
Von alpinen Ski-Looks über die mondänen
It-Places in der Glamour-Destination
Kitzbühel – die Piste ruft!

IN HÖCHSTEN
SPHÄREN
Ein Ausflug in die
himmliche Welt
der Haute Joaillerie
und Haute Couture

Voyage, VOYAGE

9 119000 110198 701
KOMPLETTER LOOK AUS DER HERBSTWINTER-
KOLLEKTION 2021/22, LOUIS VUITTON

HEIGHT 180 CM / 5'11" | CHEST 83 CM / 32.5" | WAIST 63 / 24.5 | HIPS 91 CM / 36" | HAIR BROWN | EYES BROWN-GREEN
DRESS 36 EU/6 US/8 UK | SHOES 40 EU/9 US/6.5 UK

wiener
models
A KULT AGENCY

DOROTA KULLOVA

VIE FERIEN IM SÜDEN: DIE NEUEN PARFUMS

annabelle

annabelle

est. 19

14/18

24. Oktober 2018
8,50 Fr. 8 €

PLASTIK
DAS DOSSIER
ZUM UMSTRITTENEN
MATERIAL

LADENSTERBEN
Kleiderketten
in der Krise

Sex? Mit
Vergnügen
Fünf Frauen
fünf Kulturen
kämpfen für
weibliche Le

+ Julia Engelmann
Tyler Brülé
Halldóra Geirharðsdóttir

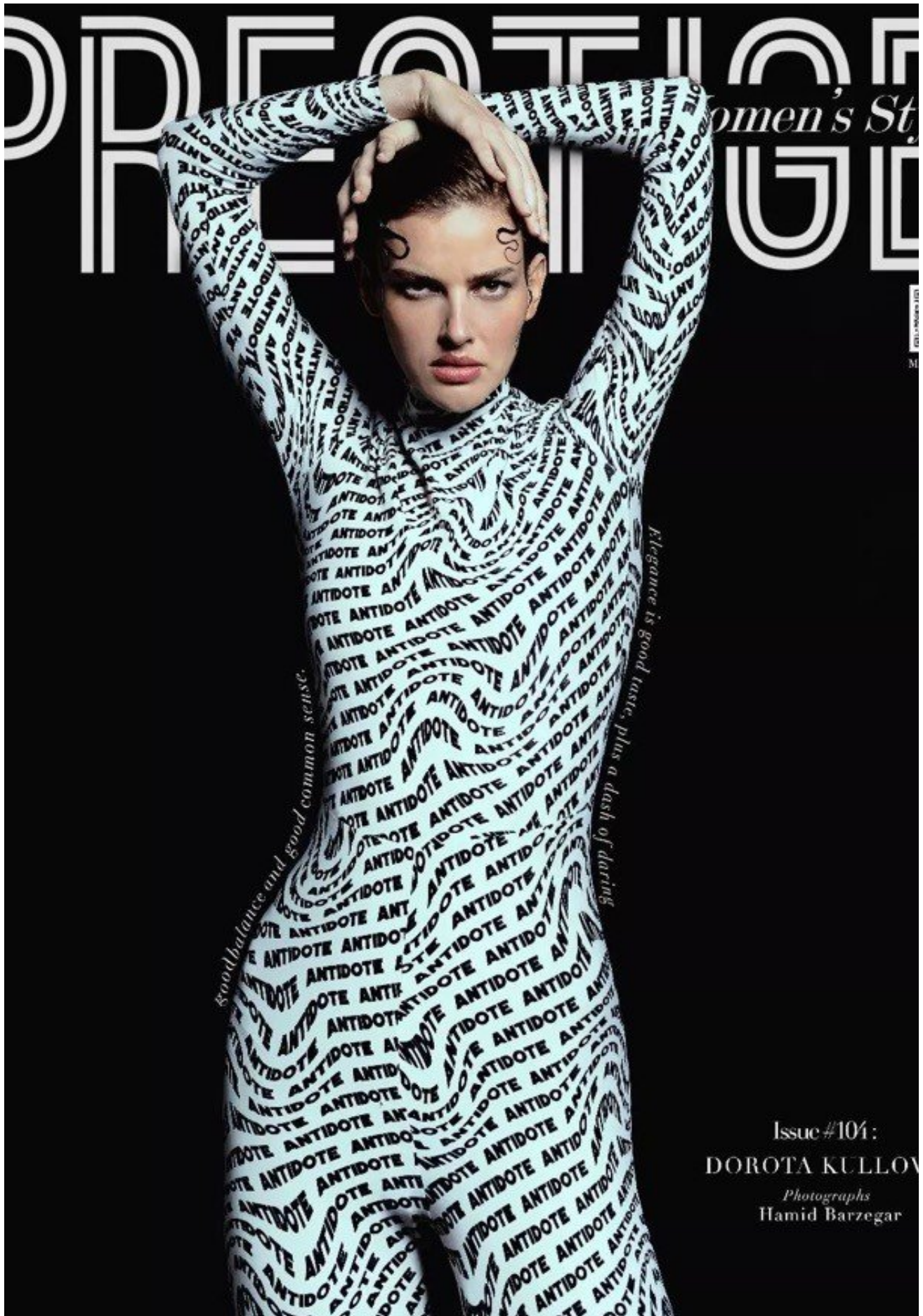
STURM-
SICHER

Die Herbstmode zeigt Beschützerinstinkt

HEIGHT 180 CM / 5'11" | CHEST 83 CM / 32.5" | WAIST 63 / 24.5 | HIPS 91 CM / 36" | HAIR BROWN | EYES BROWN-GREEN
DRESS 36 EU/6 US/8 UK | SHOES 40 EU/9 US/6.5 UK

wiener
models
A KULT AGENCY

DOROTA KULLOVA

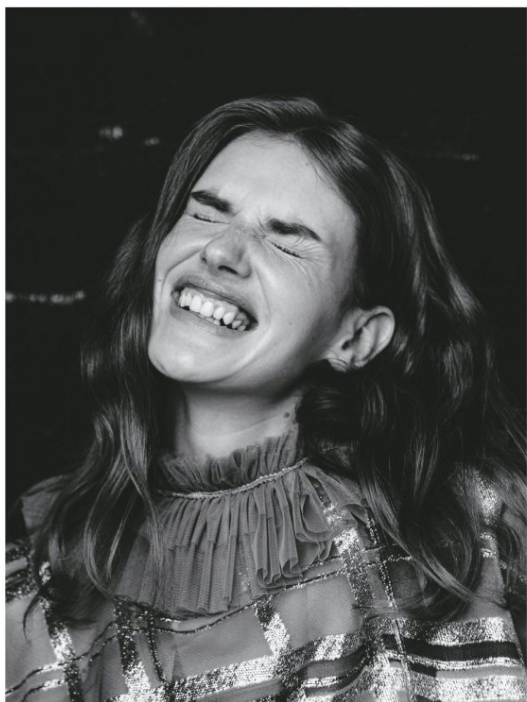


HEIGHT 180 CM / 5'11" | CHEST 83 CM / 32.5" | WAIST 63 / 24.5 | HIPS 91 CM / 36" | HAIR BROWN | EYES BROWN-GREEN
DRESS 36 EU/6 US/8 UK | SHOES 40 EU/9 US/6.5 UK

wiener
models
A KULT AGENCY

DOROTA KULLOVA

85



WARUM LÄCHELN TOTE IMMER?

Mit dem Tod erschlaffen die Muskeln. Wenn der Leichnam auf dem Rücken liegt, zieht das Gewicht das Gewebe nach unten, die Haut wird straff, die Mundwinkel ziehen sich ein wenig in die Breite – und formen sich zu einem Lächeln.

HEIGHT 180 CM / 5'11" | CHEST 83 CM / 32.5" | WAIST 63 / 24.5 | HIPS 91 CM / 36" | HAIR BROWN | EYES BROWN-GREEN
DRESS 36 EU/6 US/8 UK | SHOES 40 EU/9 US/6.5 UK

DOROTA KULLOVA

WIENERIN

Nr. 382, November 2021
Österreich € 4,90
www.wienerin.at

NUR KEINE
FALSCHES
SCHAM

Ein Dossier über
ein Gefühl voller
Widersprüche

Einfach loslachen

Lachen stärkt unsere Psyche und macht uns glücklich.
Wie wir lernen, wieder lachend durchs Leben zu gehen

11
9 004 576 300000

HEIGHT 180 CM / 5'11" | CHEST 83 CM / 32.5" | WAIST 63 / 24.5 | HIPS 91 CM / 36" | HAIR BROWN | EYES BROWN-GREEN
DRESS 36 EU / 6 US / 8 UK | SHOES 40 EU / 9 US / 6.5 UK

wiener
models
A KULT AGENCY

DOROTA KULLOVA

EL ÚNICO

Mono acolchado, camisa de jacquard de seda y cinturón, todo de **Chanel**.



HEIGHT 180 CM / 5'11" | CHEST 83 CM / 32.5" | WAIST 63 / 24.5 | HIPS 91 CM / 36" | HAIR BROWN | EYES BROWN-GREEN
DRESS 36 EU / 6 US / 8 UK | SHOES 40 EU / 9 US / 6.5 UK

wiener
models
A KULT AGENCY

DOROTA KULLOVA



№ 125
Февраль 2015

Настроение
КРУИЗ 70-Х
МАРСАЛА И БАМБУК
НАРЯД ДНЯ
ВАЛЕНТИНА
ФРАНЦУЖЕНКА
И ВОСТОК

Имена
ОСКАР МОДЫ
ФРЭНК ГЕРН И ЛУ
ЭЛИЗА СЕНДАУН

Оттенки
Страсти

НЕДЕЛИ МОДЫ
ПАРИЖ, МИЛАН,
РИГА, ЛОНДОН

Направления
НЬЮ ЙОРК
ЛОС-АНДЖЕЛЕС
КУРШЕВЕЛЬ
РИО
БАНГКОК
МАРРАКЕШ

VIKTOR & ROLF HAUTE COUTURE
Браслет, CARTIER

ISSN 1990-4576



125

4 820070 460018

HEIGHT 180 CM / 5'11" | CHEST 83 CM / 32.5" | WAIST 63 / 24.5 | HIPS 91 CM / 36" | HAIR BROWN | EYES BROWN-GREEN

DRESS 36 EU / 6 US / 8 UK | SHOES 40 EU / 9 US / 6.5 UK

wiener
models
A KULT AGENCY

DOROTA KULLOVA



HEIGHT 180 CM / 5'11" | CHEST 83 CM / 32.5" | WAIST 63 / 24.5 | HIPS 91 CM / 36" | HAIR BROWN | EYES BROWN-GREEN
DRESS 36 EU / 6 US / 8 UK | SHOES 40 EU / 9 US / 6.5 UK

wiener
models
A KULT AGENCY

DOROTA KULLOVA

VanityTrend

NINGUNA VANIDAD SE DA EN VANO (ALEXANDER POPE)

ESTE
SEPTIEMBRE
2019

PASE PÁGINA

El 60º aniversario de Valentino, una colección de joyas de aires celestiales y el nuevo bolso de Carolina Herrera inspirado en la hípica le invitan a entrar en la temporada a ritmo sartorial.



Dorota Kullova viste camisa con cuello de frac de Jan Taminiau; chaqueta cruzada con estampado escocés y gorro de piel, ambos de Dior; y criollas de plata de Bottega Veneta.

SEPTIEMBRE 2019

FOTOGRAFÍA PEPE LÓBEZ

VANITY FAIR 19

HEIGHT 180 CM / 5'11" | CHEST 83 CM / 32.5" | WAIST 63 / 24.5 | HIPS 91 CM / 36" | HAIR BROWN | EYES BROWN-GREEN
DRESS 36 EU / 6 US / 8 UK | SHOES 40 EU / 9 US / 6.5 UK

wiener
models
A KULT AGENCY

DOROTA KULLOVA

WILD WILD RED

UVOLNĚTE SE, DOPŘEJTE SI
PROSTOR A SVÉMU TĚLU POHODLÍ.
LETNÍ ŠATNÍK OVLÁDAJÍ SPLÝVAVÉ
STŘIHY A PŘÍRODNÍ, RAFINOVANĚ
TRANSPARENTNÍ MATERIÁLY.

BUNDA A ŠORTKY, HERMÈS

FOTO MATÚŠ TÓTH MODELKA DOROTA K./ELITE BRATISLAVA
STYLING MILENA ŽURAVLJOVA MAKE-UP IVANA TOKÁRSKA/SENSAI
VLASY IVANA TOKÁRSKA/SACHAJUAN

HEIGHT 180 CM / 5'11" | CHEST 83 CM / 32.5" | WAIST 63 / 24.5 | HIPS 91 CM / 36" | HAIR BROWN | EYES BROWN-GREEN
DRESS 36 EU/6 US/8 UK | SHOES 40 EU/9 US/6.5 UK

wiener
models
A KULT AGENCY

DOROTA KULLOVA

MELANCOLÍA OTOÑAL

Chaquetón de lana, vestido asimétrico de raso con bordado Karligraphy y botas, todo de **Fendi**; collares, de **Goossens**.



SEPTIEMBRE MARIECLAIRE 93

HEIGHT 180 CM / 5'11" | CHEST 83 CM / 32.5" | WAIST 63 / 24.5 | HIPS 91 CM / 36" | HAIR BROWN | EYES BROWN-GREEN
DRESS 36 EU / 6 US / 8 UK | SHOES 40 EU / 9 US / 6.5 UK

wiener
models
A KULT AGENCY

DOROTA KULLOVA

Vestido palabra de honor con mangas abullonadas, de **Isabel Marant**, y top estampado de **Mango**.

En la página anterior, vestido de **Carolina Herrera New York** y camiseta de **El Corte Inglés**.

Arreglos FLORALES

Bajo los rigores de la canícula, las *flores* brotan en los estilismos más elegantes como símbolo incontestable de *optimismo y feminidad*.

HEIGHT 180 CM / 5'11" | CHEST 83 CM / 32.5" | WAIST 63 / 24.5 | HIPS 91 CM / 36" | HAIR BROWN | EYES BROWN-GREEN
DRESS 36 EU / 6 US / 8 UK | SHOES 40 EU / 9 US / 6.5 UK

wiener
models
A KULT AGENCY

DOROTA KULLOVA



'COWGIRL' URBANA

Chaqueta de lúrex, bermudas, camisa de terciopelo con tachuelas y botas, todo de **Louis Vuitton**.

SEPTIEMBRE MARIECLAIRE 59

HEIGHT 180 CM / 5'11" | CHEST 83 CM / 32.5" | WAIST 63 / 24.5 | HIPS 91 CM / 36" | HAIR BROWN | EYES BROWN-GREEN
DRESS 36 EU / 6 US / 8 UK | SHOES 40 EU / 9 US / 6.5 UK

wiener
models
A KULT AGENCY

DOROTA KULLOVA



4.59 € /// 99.90 Kč /// JAR 2020 /// 22 VYDANIE
WWW.TOP-FASHION.SK /// WWW.TOPFASHIONMAGAZIN.CZ
TOPFASHIONMAGAZIN /// TOPFASHIONMAGAZINE

JAR 2020

R E G E N E R Á C I A

HEIGHT 180 CM / 5'11" | CHEST 83 CM / 32.5" | WAIST 63 / 24.5 | HIPS 91 CM / 36" | HAIR BROWN | EYES BROWN-GREEN
DRESS 36 EU / 6 US / 8 UK | SHOES 40 EU / 9 US / 6.5 UK

wiener
models
A KULT AGENCY

DOROTA KULLOVA

LA PERFECCIO

La piel Guerla
no adm
imperfeccion
de ningún tip
pero no renunc
a la naturalida
Chaqueta, de Lau
Bernal; pulsera,
@PedrabyPedrazue



HEIGHT 180 CM / 5'11" | CHEST 83 CM / 32.5" | WAIST 63 / 24.5 | HIPS 91 CM / 36" | HAIR BROWN | EYES BROWN-GREEN
DRESS 36 EU / 6 US / 8 UK | SHOES 40 EU / 9 US / 6.5 UK

wiener
models
A KULT AGENCY

DOROTA KULLOVA



STARDUST BY
CARINE ROITFELD

FABULOUS
at every age
年代別・輝く女たちのいま

HEIGHT 180 CM / 5'11" | CHEST 83 CM / 32.5" | WAIST 63 / 24.5 | HIPS 91 CM / 36" | HAIR BROWN | EYES BROWN-GREEN
DRESS 36 EU / 6 US / 8 UK | SHOES 40 EU / 9 US / 6.5 UK

wiener
models
A KULT AGENCY

DOROTA KULLOVA

marie claire

w.marie-claire.com

RETORNO A LA OFICINA

Look working por menos de 50 €

Despachos que nos inspiren

¿Quién eres sin tu trabajo?

CAMBIO DE BELLEZA

El regreso del maquillaje

Pelo corto

VUELVE LA MODA

- Nuevo uniforme
- Brillos dorados
- Punto rústico

¿Por qué seguimos
creyendo en el horóscopo?

Enoturismo
4 destinos
entre copas

HEIGHT 180 CM / 5'11" | CHEST 83 CM / 32.5" | WAIST 63 / 24.5 | HIPS 91 CM / 36" | HAIR BROWN | EYES BROWN-GREEN

DRESS 36 EU/6 US/8 UK | SHOES 40 EU/9 US/6.5 UK

wiener
models
A KULT AGENCY

DOROTA KULLOVA

*Americana y camisa,
ambas de **Marella**;
y shorts de **Levi's**.*

*En la página anterior,
vestido de **RED
Valentino**
y anillos de **Isabel
Guarch**.*

*Maquillaje y
peluquería: **Yurema
Villa** (Ana Prado)
para Guerlain y
Mön Icon Team.
Modelo: **Dorota
Kullova** (Uno Models).
Asistente de estilismo:
Liliana Palop.
Asistente de fotografía:
Raúl Lorenzo.*



HEIGHT 180 CM / 5'11" | CHEST 83 CM / 32.5" | WAIST 63 / 24.5 | HIPS 91 CM / 36" | HAIR BROWN | EYES BROWN-GREEN
DRESS 36 EU / 6 US / 8 UK | SHOES 40 EU / 9 US / 6.5 UK

wiener
models
A KULT AGENCY

DOROTA KULLOVA

STYL



Prsten, 149 000 Kč, náramek,
506 000 Kč, růžové zlato
a diamanty, obojí z kolekce
Tiffany T1, obojí **Tiffany &
Co.**; rolák, **Denisa Nová**,
Studio DNB, 4500 Kč

T J A K O . . .

...touha, jako trendy, jako Tiffany & Co.
Představujeme ty nejkrásnější šperky pro
denní nošení.

Foto HANA KNÍŽOVÁ

52 | HARPER'S BAZAAR | Září 2020

HEIGHT 180 CM / 5'11" | CHEST 83 CM / 32.5" | WAIST 63 / 24.5 | HIPS 91 CM / 36" | HAIR BROWN | EYES BROWN-GREEN
DRESS 36 EU / 6 US / 8 UK | SHOES 40 EU / 9 US / 6.5 UK

wiener
models
A KULT AGENCY

DOROTA KULLOVA



Prsten Tiffany T1, žluté zlato,
57 000 Kč, prsten Tiffany T1, růžové
zlato, 57 000 Kč; náhrdelník City
HardWear, růžové zlato, 232 000 Kč,
náhrdelník City HardWear, žluté
zlato, 58 000 Kč, vše **Tiffany & Co.**,
kabát, **Ivana Mentlová**, Space,
32 000 Kč

HEIGHT 180 CM / 5'11" | CHEST 83 CM / 32.5" | WAIST 63 / 24.5 | HIPS 91 CM / 36" | HAIR BROWN | EYES BROWN-GREEN
DRESS 36 EU / 6 US / 8 UK | SHOES 40 EU / 9 US / 6.5 UK

wiener
models
A KULT AGENCY

DOROTA KULLOVA



HEIGHT 180 CM / 5'11" | CHEST 83 CM / 32.5" | WAIST 63 / 24.5 | HIPS 91 CM / 36" | HAIR BROWN | EYES BROWN-GREEN
DRESS 36 EU / 6 US / 8 UK | SHOES 40 EU / 9 US / 6.5 UK

wiener
models
A KULT AGENCY

DOROTA KULLOVA

KABÁT A TOPÁNKY
SPORTMAX – PŘEDÁVA
MAX MARA, PRSTEN CÉLINE



HEIGHT 180 CM / 5'11" | CHEST 83 CM / 32.5" | WAIST 63 / 24.5 | HIPS 91 CM / 36" | HAIR BROWN | EYES BROWN-GREEN
DRESS 36 EU/6 US/8 UK | SHOES 40 EU/9 US/6.5 UK

wiener
models
A KULT AGENCY

DOROTA KULLOVA

FASHIONELLE



Saty, BALENCIAGA
(MYTHERESA),
36 140 Kč.
Mašle, ZUZANA
KUBÍČKOVÁ,
INFO OCENĚ
UNÁVRHÁŘE, *Boty*,
DOICE & GABBANA,
INFO OCENĚ
VOBCHODĚ

113

HEIGHT 180 CM / 5'11" | CHEST 83 CM / 32.5" | WAIST 63 / 24.5 | HIPS 91 CM / 36" | HAIR BROWN | EYES BROWN-GREEN
DRESS 36 EU / 6 US / 8 UK | SHOES 40 EU / 9 US / 6.5 UK

wiener
models
A KULT AGENCY

DOROTA KULLOVA

€ 3,00 Eur Číslo: Zima 2017 www.femininity.sk

DOROTA KULLOVÁ

ČLOVEK DOKÁŽE VEĽA,
LEN TREBA ČINY, NIE REČI

COOL MODNA & BEAUTY
REVOLUCIA V TRENDOCH

ŽIJEME V DOBE, V KTOREJ KAŽDÝ
MOŽE BYŤ VŠETKÝM?

HYGGE: NÁVOD NA
ŠŤASTNÝ ŽIVOT

SÚ BIOMATKY NAOZAJ TAKÉ, AKO SA
UKAZUJÚ NA SOCIÁLNYCH SIEŤACH?

9 771339 1984002
www.femininity.sk

HEIGHT 180 CM / 5'11" | CHEST 83 CM / 32.5" | WAIST 63 / 24.5 | HIPS 91 CM / 36" | HAIR BROWN | EYES BROWN-GREEN
DRESS 36 EU/6 US/8 UK | SHOES 40 EU/9 US/6.5 UK

wiener
models
A KULT AGENCY

DOROTA KULLOVA



minx
BY EVA LUTZ

HEIGHT 180 CM / 5'11" | CHEST 83 CM / 32.5" | WAIST 63 / 24.5 | HIPS 91 CM / 36" | HAIR BROWN | EYES BROWN-GREEN
DRESS 36 EU / 6 US / 8 UK | SHOES 40 EU / 9 US / 6.5 UK

wiener
models
A KULT AGENCY

DOROTA KULLOVA

The magazine cover features a full-page photograph of Dorothea Kulla. She is wearing a light-colored, long-sleeved blouse with a large bow at the neck and high-waisted, wide-leg trousers with a plaid pattern and a wide belt. She is leaning against the hood of a dark car in a desert landscape under a blue sky. The magazine title 'GRAZIA' is printed in large red letters across the top. Various headlines and teasers are scattered around the cover, including 'Big Fashion Issue', '233 HEISSE TEILE MIT FOREVER-FAKTOR', and 'Der NEUE Dresscode!'. A barcode is visible in the top right corner.

164 SEITEN STYLE-SPECIAL

Mr. 37/5. September 2019
Deutschland 3,40 Euro
www.grazia-magazin.de

Big Fashion Issue

233

HEISSE TEILE MIT FOREVER-FAKTOR

- * Sexy Overknees
- * Bunte Bags im Lego-Look
- * Glow mit Gliederschmuck
- * Denim-Farb-Battle
- * Uhren mit Dunkelziffer

Der NEUE Dresscode!

SELBSTBEWUSST, STARK, MUTIG

- + Die Signature-Looks der großen Designer
- + Power-Ladys, deren Outfits wir lieben
- + Coole Klassiker neu gestylt

HOT STORIES
Jennifer Lopez
50
IST DAS NEUE WOW!
GRAZIA enthüllt ihr Body-Geheimnis
&
Meghan Markle
STREIT WEG HARRYS

Exklusive Interviews
IRIS APFEL
MARC JACO
UND
KATE MOS

Österreich 3,60 €, Schweiz 5,60 CHF, Italien 4,20 €, Benelux 3,80 €, Spanien 4,20 €, Kanarische Inseln 4,50 €, Frankreich 4,20 €, Portugal 4,30 €, Slowenien 5,20 €, Griechenland 5,00 €, Un

HEIGHT 180 CM / 5'11" | CHEST 83 CM / 32.5" | WAIST 63 / 24.5 | HIPS 91 CM / 36" | HAIR BROWN | EYES BROWN-GREEN

DRESS 36 EU/6 US/8 UK | SHOES 40 EU/9 US/6.5 UK

wiener
models
A KULT AGENCY

DOROTA KULLOVA

Camisa de muselina de seda de Valentino, casquete de fieltro de Loewe y criollas de plata de Bottega Veneta.

Abrigo estampado de rayón metalizado, traje de raya diplomática y guantes de piel, todo de Dries Van Noten; salones de piel verde de Gucci y reloj Panthère de oro blanco con esfera de diamantes de Cartier.



SEPTIEMBRE 2019

VANITY FAIR 21

HEIGHT 180 CM / 5'11" | CHEST 83 CM / 32.5" | WAIST 63 / 24.5 | HIPS 91 CM / 36" | HAIR BROWN | EYES BROWN-GREEN
DRESS 36 EU/6 US/8 UK | SHOES 40 EU/9 US/6.5 UK

wiener
models
A KULT AGENCY